

微型帽式导电滑环是壳体附有圆形法兰,同时外形尺寸更小的一系列导电滑环的统称,主要用于传输精密信号,微弱电流;具有低扭矩,低损耗免维护;低电气噪音等主要特点;

PSR-Ms是微型的帽式系列产品,接触材料使用金。彩色耐高温导线简化电气连接。

PSR-Ms的设计与PSR-Cs相类似,但体积更小,更能满足苛刻地空间的系统需求;

PSR-Ms包含PSR-M6, PSR-M8, PSR-M12三款导电滑环基本型号,提供6路,8路,12路传输电路;并有多款外型样式可共选择,或可根据客户需求定制外型;

The PSR-Ms slip ring miniature capsule is a standard, off-the-shelf series product with Miniature size, that uses gold contacts at the rotary interface. Color-coded lead wires are used on both the stator and rotor for simplified electrical connections..

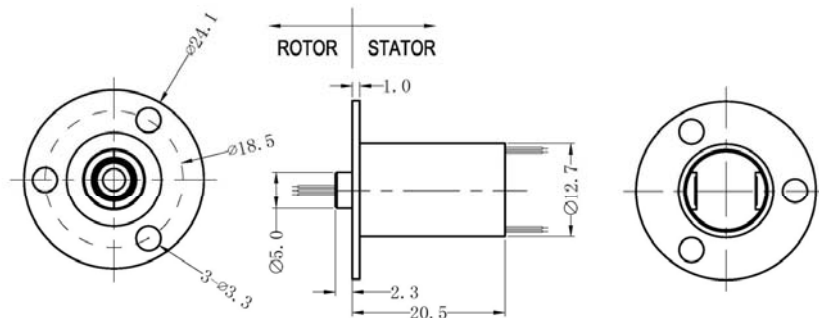
Using a 90°V-groove ring design for each ring, the PSR-Ms provides smoother running, lower torque low contact wear rates than competitive slip ring. PSR-Ms include PSR-M6, PSR-M8, PSR-M12 slip ring model, provides 6, 8, 12 circuit configurations.

MS系列编码简示



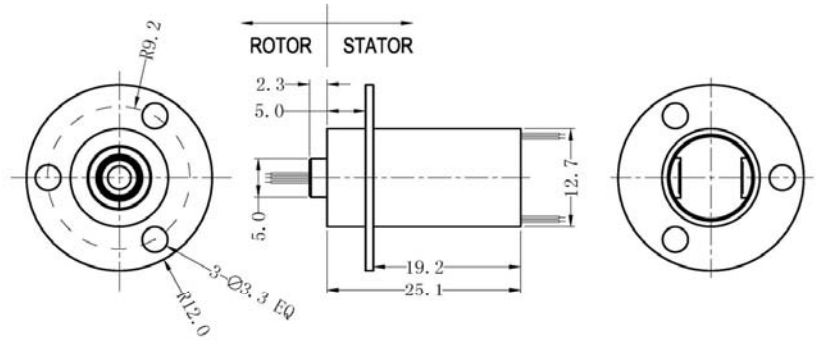
型基本号及尺寸 Basic Model And Size

| 主体直径 Outer dia:12.7mm | | |
|-----------------------------|-----------------|-------------------|
| 法兰直径 Flange Diameter:24.1mm | | |
| 基本型号 Model No. | 通路数 Circuits | 长度L Length "L" |
| PSR-M6 | 6 | 20.35mm |
| PSR-M8 | 8 | 20.5mm |
| | | |
| | | |



主体直径 Outer dia: 12.7mm
法兰直径 Flange Diameter: 24.1mm

| 基本型号 Model No. | 通路数 Circuits | 长度L Length "L" |
|-------------------|-----------------|-------------------|
| PSR-M12 | 12 | 25.1mm |
| | | |
| | | |
| | | |

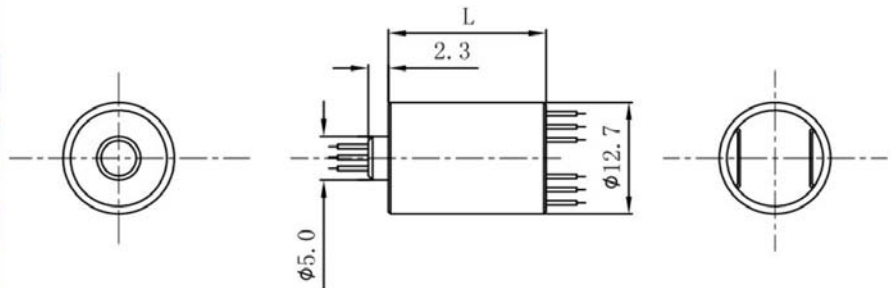


外形样式 Shape Style

○ A型 Model A : 无法兰 No Flange

主体直径 Outer dia: 12.7mm
法兰直径 Flange Diameter: Nil

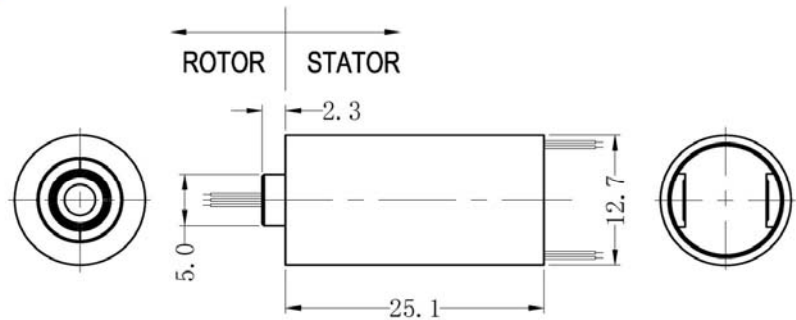
| 基本型号 Model No. | 通路数 Circuits | 长度L Length "L" |
|-------------------|-----------------|-------------------|
| PSR-M6-A | 6 | 20.35mm |
| PSR-M8-A | 12 | 20.5mm |
| | | |
| | | |



○ A型 Mode A : 无法兰 No Flange

主体直径 Outer dia: 12.7mm
法兰直径 Flange Diameter: Nil

| 基本型号 Model No. | 通路数 Circuits | 长度L Length "L" |
|-------------------|-----------------|-------------------|
| PSR-M12-A | 12 | 25.1mm |
| | | |
| | | |
| | | |



○ 特性 Feature

紧凑化设计，小体积，满足苛刻空间需求
Compact miniature design, small size fit for harsh space

模块化设计，满足更高电流，转速，外形等需求
Moudle design; Meet the most of requirement

多样化外形，支持更多安装要求
More install method for option

支持信号，电源及其混合传输：
Can combine signal and power in same slip ring



○ 材料及配件 Material and Parts

| | |
|--------------------------|--|
| 壳体材料 House | 工程塑料 Engineer Plastics |
| 接触材料 Contact material | 贵金属：金-金 Precious Metal:Gold-Gold |
| 导线 Lead Wire | 12色AWG#28 Teflon高温导线 12color #28AWG Teflon wire |
| 轴承 Bearing | 精密滚珠轴承 Precision ball bearings |

○ 机械性能 Mechanical Spec

| | |
|--------------------|----------------------|
| 转速 Speed | 300转/分钟 300Rpm |
| 扭矩 Torque | 0.01 N.M 0.01 N.M |
| 防护等级 Seal class | Ip54 Ip54 |

○ 环境 Environment

| | |
|------------------------------|------------------------------|
| 工作温度 Operation temp. | -40℃ ~ +80℃ -40℃ ~ +80℃ |
| 机械振动 Mechanical vibration | MIL-SID-810E MIL-SID-810E |
| 相对湿度 Relative humidity | 60% 60% |

○ 电气性能 Electrical Spec

| | |
|-------------------------------|---|
| 额定电压 Rating voltage | 240VAC 240VAC |
| 额定电流 Rating current | 2A/路,并联支持5A,10A 2A /Ring, 5A,10A by parelled |
| 绝缘电阻 Insulation resistance | 1000MΩ@500VDC 1000MΩ@500VDC |
| 耐压 Dielectric strength | 600VDC@50Hz 600VDC@50Hz |
| 电气噪音 Electrical noise | 10mΩ@6VDC,50mA, 5Rpm 10mΩ@6VDC,50mA, 5Rpm |

○ 典型应用 Typical Application

CCTV监控系统
CCTVMonitoring System;
电气测试设备
Electrical test equipment;
医疗设备
Medical equipment
机器人
Robotics;
旋转工作台
Rotary table
小型卷线机
Small winder

超微型帽式导电滑环是壳体附有圆形法兰的一系列导电滑环的统称，主要用于传输精密信号，微弱电流；具有低扭矩，低损耗免维护；低电气噪音等主要特点；

PSR-M6S/12S是标准的超短型系列产品，接触材料使用金。彩色耐高温导线简化电气连接。相对M系列，该系列产品长度尺寸更短，以满足客户对尺寸更苛刻的要求。

PSR-M6S/12S导电环采用90度V型槽设计，低力矩，低损耗，低电气噪音，领先同类滑环。包含PSR-M6S, PSR-M12S, 2个滑环产品型号，提供6路，12路，传输电路。

The PSR-Ms slip ring capsule is a standard, off-the-shelf series product, that uses gold contacts at the rotary interface. Color-coded lead wires are used on both the stator and rotor for simplified electrical connections.compared with M series, it's more shorter.

Using a 90°V-groove ring design for each ring, the PSR-Ms provides smoother running, lower torque low contact wear rates than competitive slip ring. PSR-Ms include PSR-M6S, PSR-M12S slip ring model, provides 6, 12, circuit configurations.

M6s/M12s系列编码简示

PSR - M 6S - A

产品代码
Product Code

系列代码
Model Code

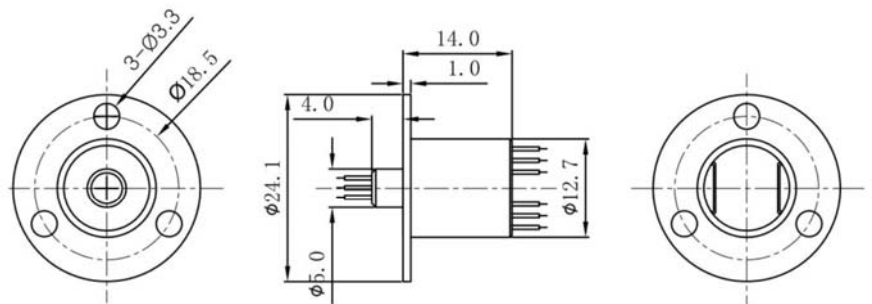
外形样式 Install type
A、B、C、D、E
... ..
可择外型样式

通路数 Circuit
6、12.....
可选择通路数
any way is available

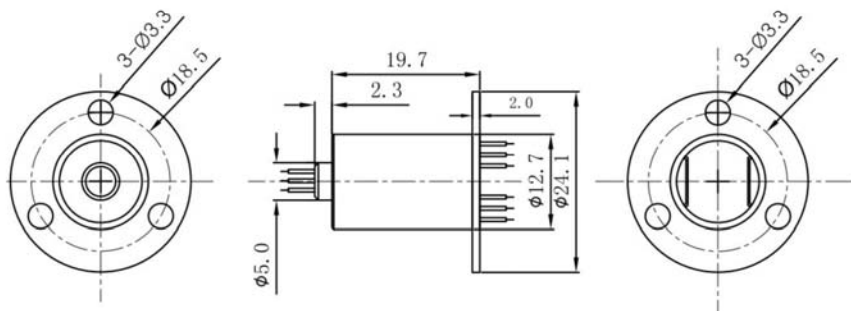
型基本号及尺寸 Basic Model And Size

主体直径 Outer dia:12.7mm
法兰直径 Flange Diameter:24.1mm

| 基本型号 Model No. | 通路数 Circuits | 长度L Length "L" |
|-------------------|-----------------|-------------------|
| PSR-M6S | 6 | 14mm |
| | | |
| | | |
| | | |



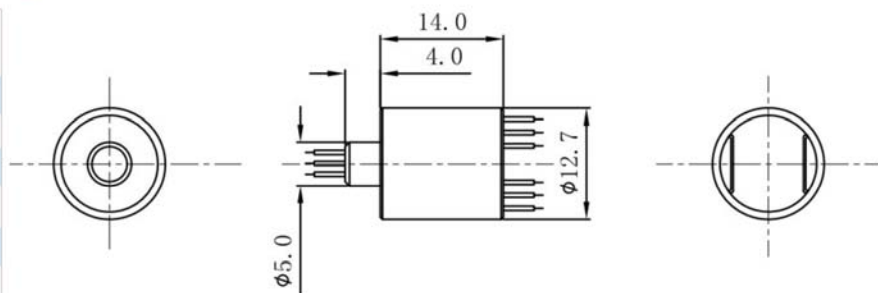
| 主体直径 Outer dia:12.7mm 法兰直径 Flange Diameter:24.1mm | | |
|--|-----------------|-------------------|
| 基本型号 Model No. | 通路数 Circuits | 长度L Length "L" |
| PSR-M12S | 12 | 19.7mm |
| | | |
| | | |



外形样式 Shape Style

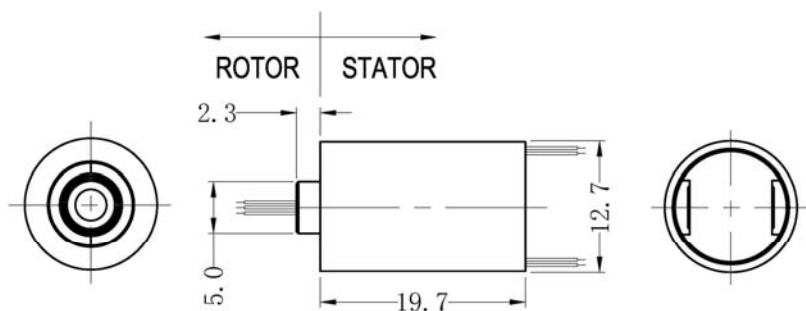
○ A型 Model A: 无法兰 No Flange

| 主体直径 Outer dia:12.7mm 法兰直径 Flange Diameter:0mm | | |
|---|-----------------|-------------------|
| 基本型号 Model No. | 通路数 Circuits | 长度L Length "L" |
| PSR-M6S-A | 6 | 14mm |
| | | |
| | | |



○ A型 Mode A: 无法兰 No Flange

| 主体直径 Outer dia:12.7mm 法兰直径 Flange Diameter:0mm | | |
|---|-----------------|-------------------|
| 基本型号 Model No. | 通路数 Circuits | 长度L Length "L" |
| PSR-M12S-A | 12 | 19.7mm |
| | | |
| | | |



特性 Feature

紧凑化设计，小体积，满足苛刻空间需求
Compact miniature design, small size fit for harsh space

模块化设计，满足更高电流，转速，外形等需求
Moudle design; Meet the most of requirement

多样化外形，支持更多安装要求
More install method for option

支持信号，电源及其混合传输；
Can combine signal and power in same slip ring



材料及配件 Material and Parts

| | |
|--------------------------|--|
| 壳体材料 House | 工程塑料 Engineer Plastics |
| 接触材料 Contact material | 贵金属: 金-金 Precious Metal: Gold-Gold |
| 导线 Lead Wire | 12色AWG#28 Teflon高温导线 12color #28AWG Teflon wire |
| 轴承 Bearing | 精密滚珠轴承 Precision ball bearings |

机械性能 Mechanical Spec

| | |
|--------------------|----------------------|
| 转速 Speed | 300转/分钟 300Rpm |
| 扭矩 Torque | 0.01 N.M 0.01 N.M |
| 防护等级 Seal class | Ip54 Ip54 |

环境 Environment

| | |
|------------------------------|--------------------------------|
| 工作温度 Operation temp. | -40°C ~ +80°C -40°C ~ +80°C |
| 机械振动 Mechanical vibration | MIL-SID-810E MIL-SID-810E |
| 相对湿度 Relative humidity | 60% 60% |

电气性能 Electrical Spec

| | |
|-------------------------------|--|
| 额定电压 Rating voltage | 240VAC 240VAC |
| 额定电流 Rating current | 2A/路, 并联支持5A, 10A 2A /Ring, 5A, 10A by combined |
| 绝缘电阻 Insulation resistance | 1000MΩ@500VDC 1000MΩ@500VDC |
| 耐压 Dielectric strength | 600VDC@50Hz 600VDC@50Hz |
| 电气噪音 Electrical noise | 10mΩ@6VDC, 50mA, 5Rpm 10mΩ@6VDC, 50mA, 5Rpm |

典型应用 Typical Application

CCTV监控系统
CCTV Monitoring System;
电气测试设备
Electrical test equipment;
医疗设备
Medical equipment
机器人
Robotics;
旋转工作台
Rotary table
小型卷线机
Small winder